

# FLUIDMASTER® 400UK074 FLOAT VALVE, FLUSH VALVE WITH FLAPPER AND FLUSH BUTTON INSTALLATION INSTRUCTIONS

TO GET THE BEST RESULTS FROM YOUR FLUIDMASTER VALVE, PLEASE READ THESE INSTRUCTIONS CAREFULLY

THE VALVE SHALL BE INSTALLED WITH THE WATER LEVEL SET BELOW THE LOWEST PART OF THE INLET OR IN COMPLIANCE WITH THE WATER SUPPLY (WATER FITTINGS) REGULATIONS 1999 AS A TYPE AG OR AC AIR GAP.

NOTE: SAVE INSTRUCTION SHEET FOR FUTURE REFERENCE CONCERNING THIS VALVE'S OPERATION AND MAINTENANCE.

**WARNING:** Fluidmaster shall not be responsible or liable for any failure of, or damage to, this plumbing product caused by its use in toilet cisterns containing high concentrations of chlorine or chlorine related products. Do not overtighten plastic nuts.

**IMPORTANT:** DO NOT use plumber's putty to seal this fitting.

Fluidmaster UK  
 Twyford Road  
 Rotherwas, Hereford, HR2 6JR  
 Tel: 01432 357331  
 Fax: 01432 264014  
 E-MAIL: salesuk@fluidmaster.com  
 WEB: www.fluidmasterUK.com

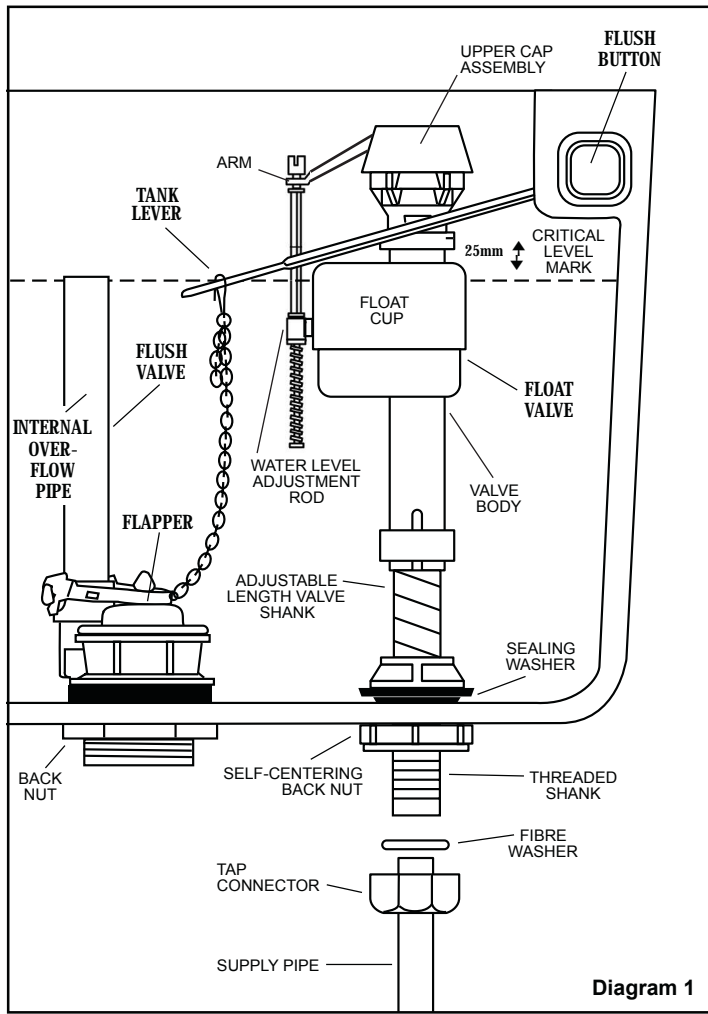
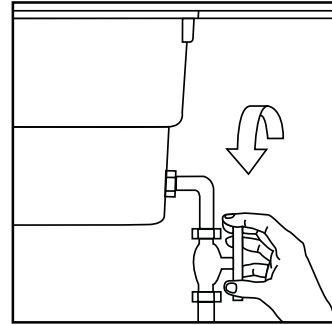
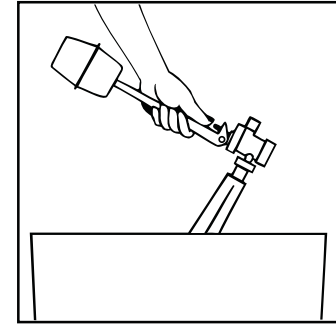


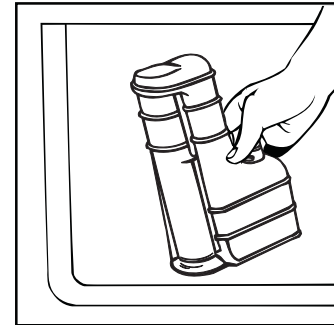
Diagram 1



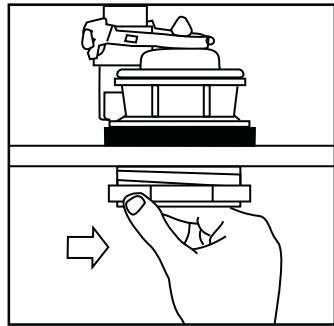
1. Turn off water supply to toilet cistern at storage tank in loft or isolator valve if mains fed.



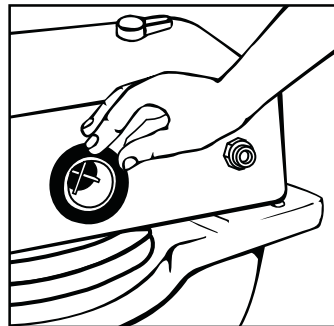
2. Disconnect pipe work and remove old float valve from toilet cistern.



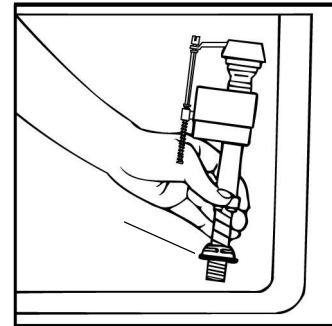
3. Disconnect pipe work and, if necessary, remove cistern from bowl. Remove old syphonic valve.



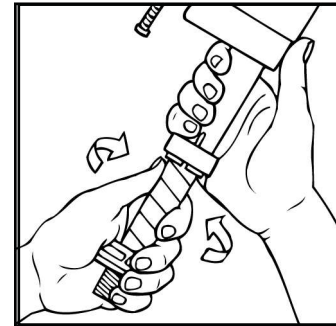
4. Slide new cistern seal onto threaded end of flush valve. Install new flush valve. Tighten back nut 1/2 turn beyond hand tight. DO NOT OVERTIGHTEN or cistern may crack.



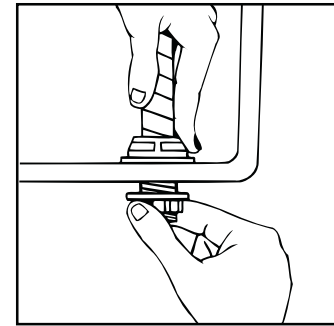
5. Carefully refit cistern-to-bowl seal (not supplied) onto threaded end of flush valve.



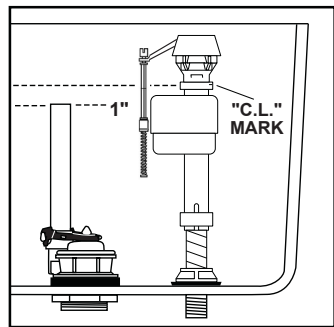
6. Place sealing washer on threaded shank of valve (cone facing down). Position valve in toilet cistern, passing threaded shank through hole in cistern to determine if valve height needs adjusting (see Step 9).



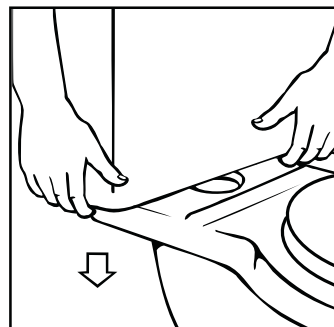
7. The Fluidmaster 400UK valve is adjustable in height from 225mm (9 inches) to 350mm (14 inches). To adjust height of valve, remove from toilet cistern and twist threaded shank in or out of valve body. A clicking noise will be heard on some models. This is normal. The valve height should be adjusted so that the critical level mark on the valve body is located at least 25mm (1 inch) above the overflow pipe in the cistern.



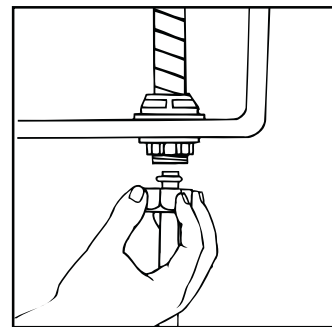
8. Install valve inside cistern. Start to thread back nut onto threaded shank so the shank protrudes through the cistern enough to enable tap connector to fit neatly. Do not tighten back nut at this stage.



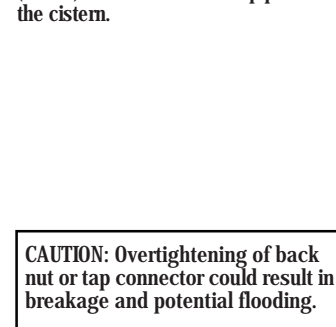
9. When installed, the top of the overflow pipe on the new flush valve should be at least 25mm (1 inch) below the hole in the cistern where the cistern lever is mounted. If necessary, cut the overflow pipe to achieve this height. The critical level mark on the float valve (identified by a C.L. mark on the Fluidmaster Float Valve) should be at least 25mm (1 inch) above the top of the overflow pipe.



10. Reconnect cistern to pipe work or bowl.

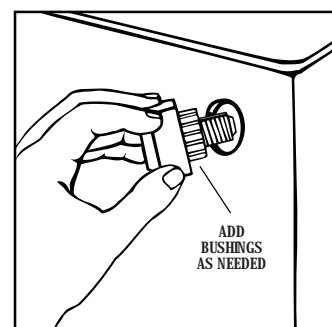
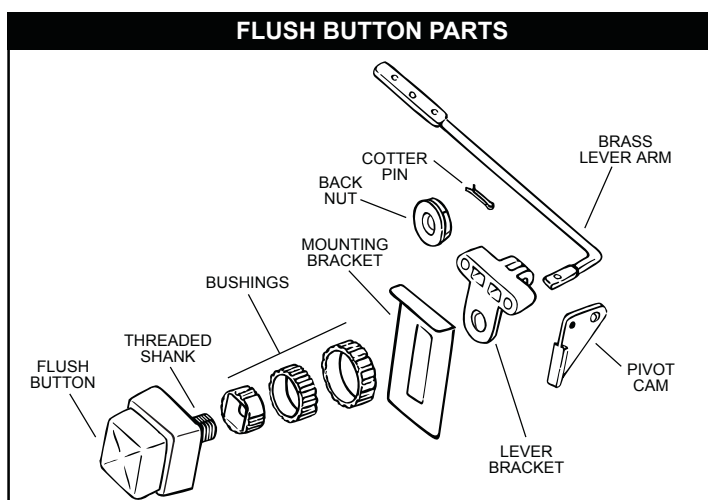


11. When position is correct and before tightening back nut of float valve, making sure fibre washer is seated correctly. Tighten tap connector 1/4 turn past hand tight with spanner (DO NOT OVERTIGHTEN). Now tighten back nut with spanner 1/4 turn past hand tight (DO NOT OVERTIGHTEN).

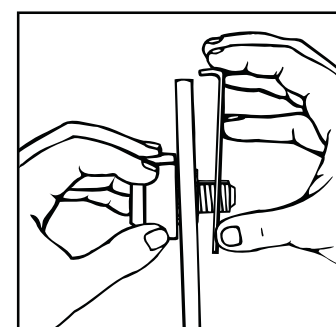


12. Unthreaded and remove old cistern lever.

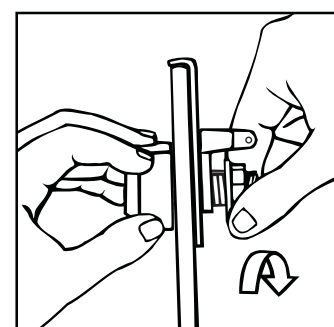
**CAUTION:** Overtightening of back nut or tap connector could result in breakage and potential flooding.



13. Slide push button shank through cistern hole (flat groove on threads facing up). For cistern with oversized mounting hole, use one, two or all three bushings for a snug fit. Start with the smallest bushing, medium, then largest bushing.



14. Place cistern mounting bracket over the threaded shank inside the cistern, allowing top of bracket to wrap over top of cistern.



15. Position lever bracket onto threaded shank and secure with back nut. DO NOT OVERTIGHTEN.