

ULTRA SYPHON COMPATABILITY

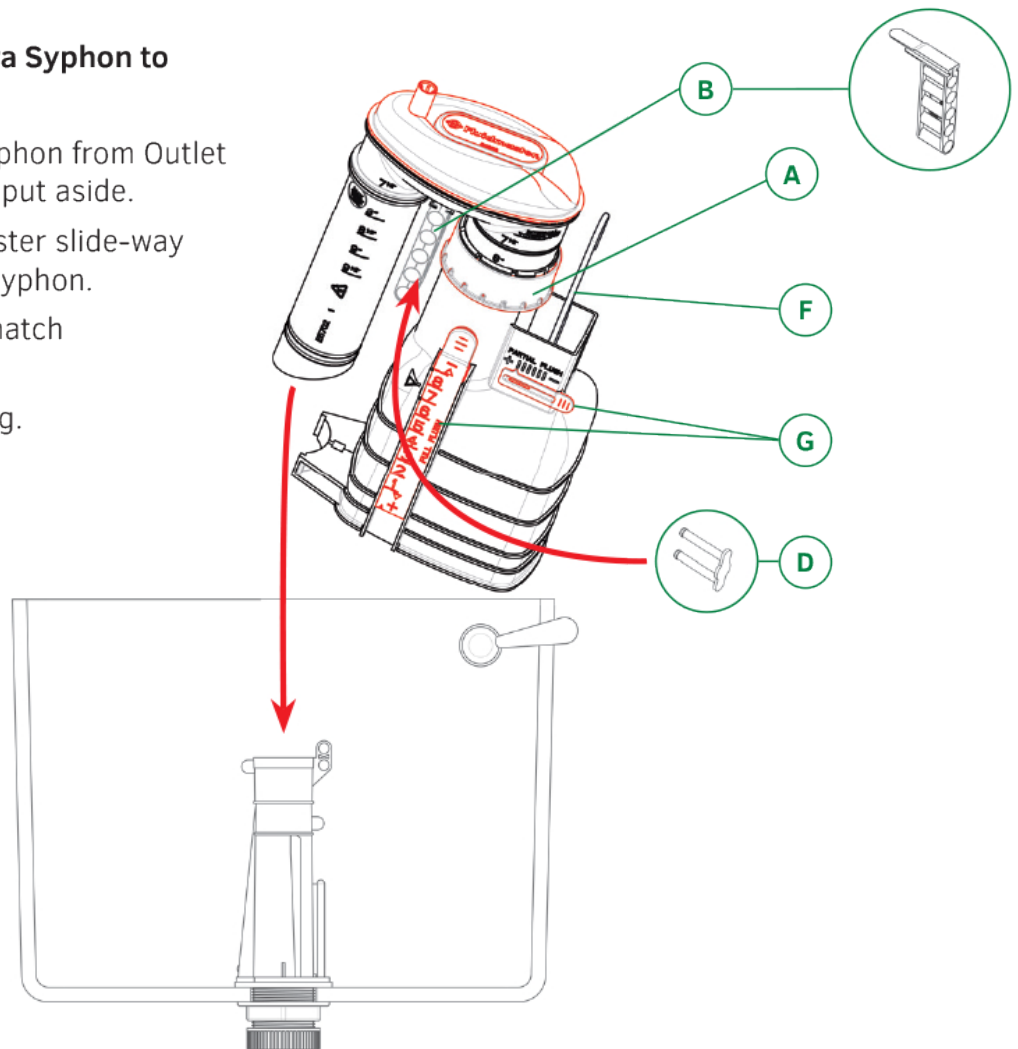
Fluidmaster ULTRA Syphon retrofits to the outlet leg of the following Thomas Dudley Ltd. 2/3 part Syphons:

- Turbo 88 7-9½”
- Turbo 88 Adjustable 7-9½”
- S44R 8-9½”
- S1-11 8-9½”

HOW TO SERVICE OR REPAIR OTHER SYPHONS

How to retrofit Fluidmaster Ultra Syphon to Thomas Dudley Outlet Leg

- Note height & remove old syphon from Outlet Leg. Remove Yellow Peg and put aside.
- Replace Syphon Height Adjuster slide-way with white adaptor to Ultra Syphon.
- Set Ultra Syphon height to match old syphon height
- Fit Ultra Syphon to Outlet Leg.
- Set Overflow Height and use Yellow Peg to secure.
- Re-fit “C” Link.
- Adjust Full and Partial Flush



Disclaimer

- The Fluidmaster Ultra Syphon Retro-fit Adaptor is supplied for servicing convenience and is not authorised or licensed by Thomas Dudley Limited.
- It is the responsibility of the installer to ensure when using the Fluidmaster Ultra Syphon Retro-fit Adaptor that the Thomas Dudley Syphon Outlet Leg, Cistern Seal and Back Nut are in serviceable condition and do not leak.
- It is the responsibility of the installer to ensure the installation functions correctly, does not leak and is compliant with relevant Regulations.