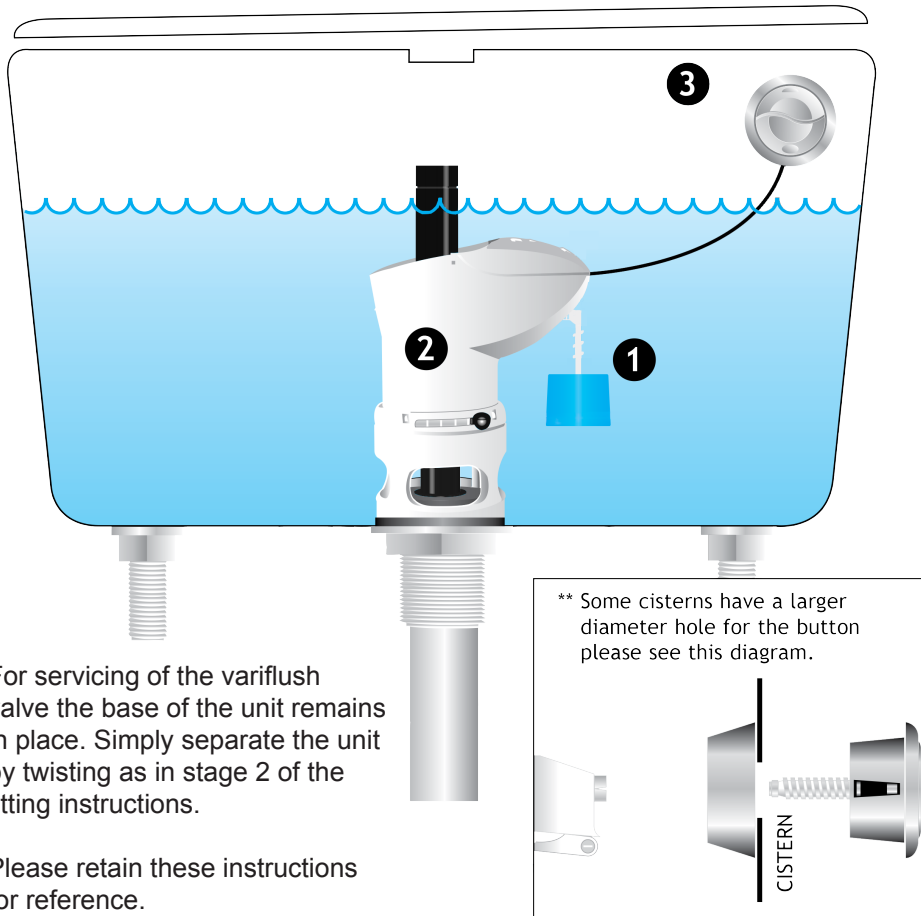


STAGE 3

Testing and adjustments

- 1 To adjust full flush water volume, rotate the float down to increase the volume of water flushed, or upward to reduce it.
- 2 To adjust partial flush water volume, slide lever at variflush base to the left to decrease the volume of water flushed, or to the right to increase it.
- 3 Ensure desired flush is achieved prior to refitting lid.



TURBECK

Variflush® Drop Valve



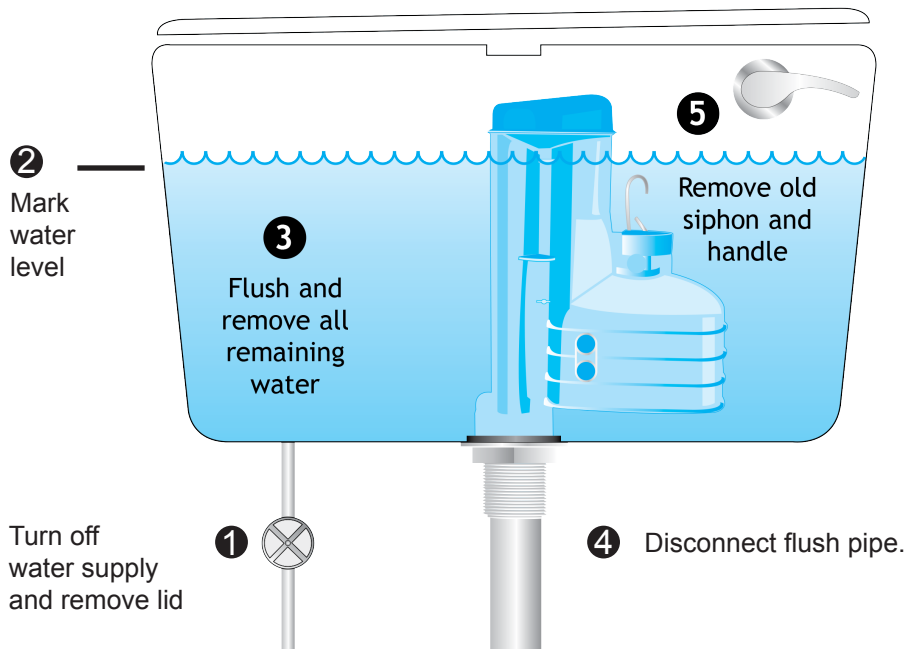
- Adjustable height
- Push button cable control
- Dual flush with full & partial adjustment
- Internal overflow
- Easy to install
- Fits most cisterns
- Made in the UK



STAGE 1

Pre-installation

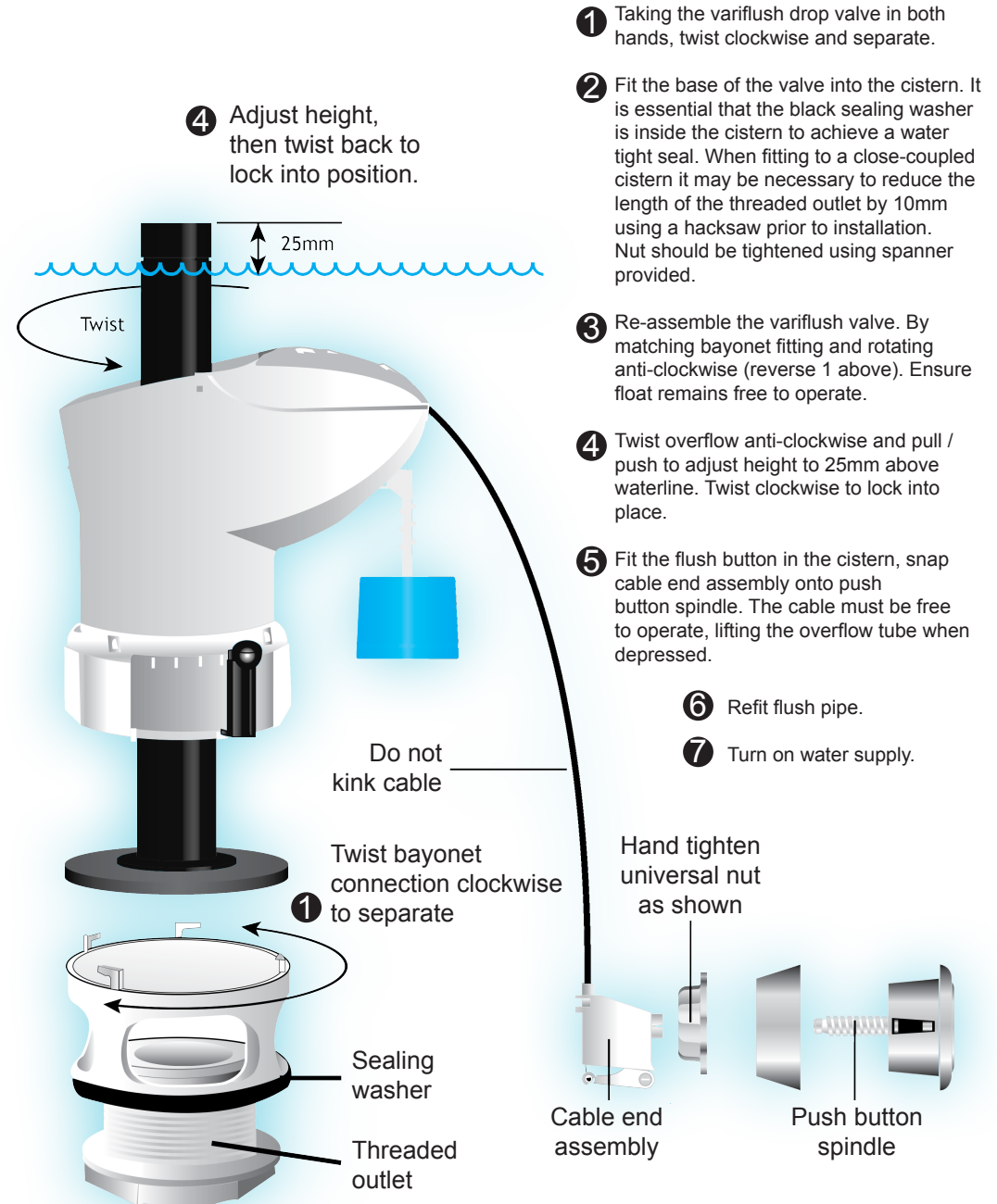
- 1 Turn off water supply to cistern and remove cistern lid.
- 2 While still full, mark the normal water level on the inside of the cistern.
- 3 Flush the cistern and remove all remaining water with a sponge or cloth.
- 4 Disconnect flush pipe.
- 5 Remove old siphon and existing handle or button.



Note: Ensure the top of the new variflush valve is below the lowest overflow point of the cistern including all apertures.

STAGE 2

Fitting your Torbeck variflush valve



- 1 Taking the variflush drop valve in both hands, twist clockwise and separate.
- 2 Fit the base of the valve into the cistern. It is essential that the black sealing washer is inside the cistern to achieve a water tight seal. When fitting to a close-coupled cistern it may be necessary to reduce the length of the threaded outlet by 10mm using a hacksaw prior to installation. Nut should be tightened using spanner provided.
- 3 Re-assemble the variflush valve. By matching bayonet fitting and rotating anti-clockwise (reverse 1 above). Ensure float remains free to operate.
- 4 Twist overflow anti-clockwise and pull / push to adjust height to 25mm above waterline. Twist clockwise to lock into place.
- 5 Fit the flush button in the cistern, snap cable end assembly onto push button spindle. The cable must be free to operate, lifting the overflow tube when depressed.
- 6 Refit flush pipe.
- 7 Turn on water supply.

** See reverse for exceptions