

How the Dualflush operation for this siphon works:

The full flush volume is achieved by flushing the WC in the normal fashion of fully depressing the lever and immediately releasing once the flush has started.

The short flush volume is achieved by fully depressing the handle in the normal fashion and holding the handle in the down position until the flushing cycle has finished.

DUALFLUSH SIPHON

Full Flush: Depress and let go.

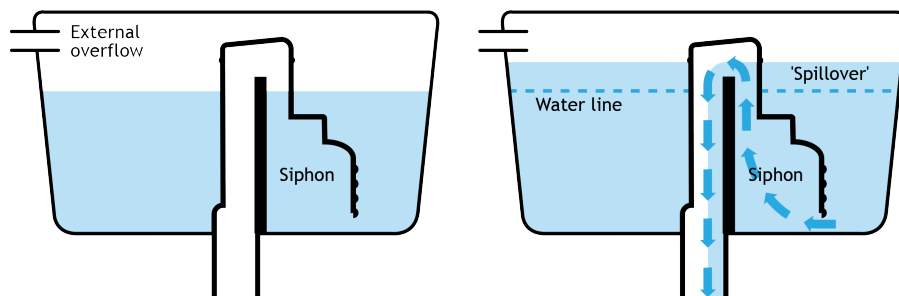
Short Flush: Depress and hold till flush has completed.

Dualflush Label

High Level Cisterns: To appear on or near the lower edge of the front of the cistern

Low Lever and Close Coupled Cisterns: To appear on the upper half of the front of the cistern shell.

Internal Overflow

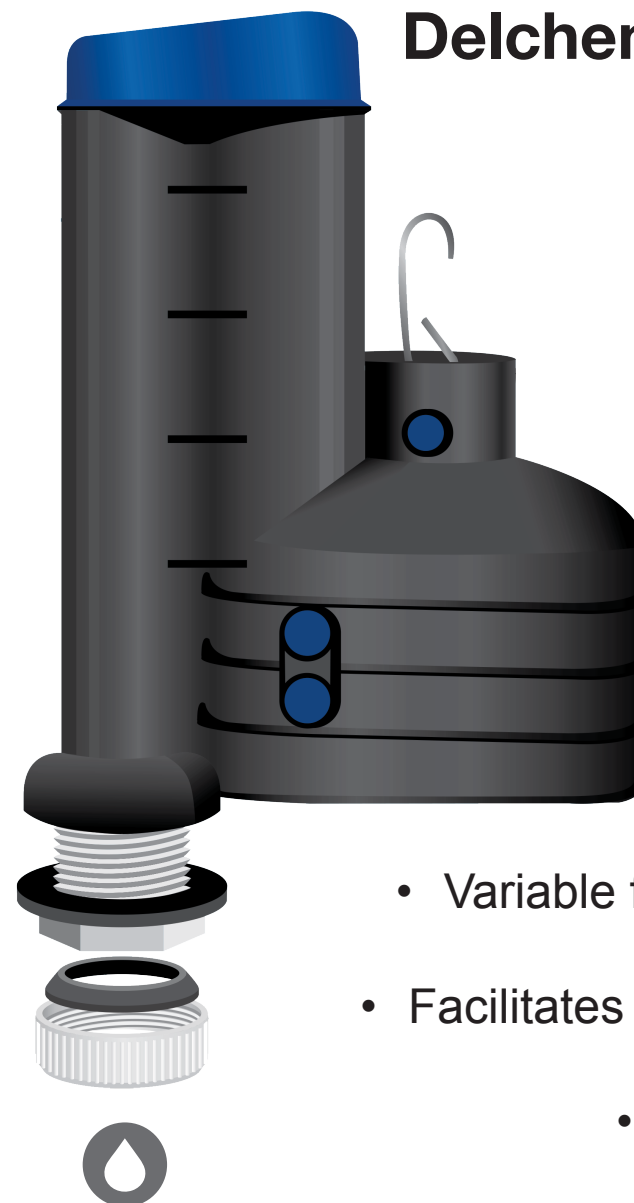


If in the unlikely event that your filling valve fails to close, all Delchem siphons feature an internal overflow which will be able to cope with upto 35l/min of excess water.

As the water level rises so will the level of water within the siphon, until it reaches point 'P', the 'spillover' point. At this point the water within the syphon will cascade down the down-tube and into the pan preventing any further increase in the height of the water within the cistern.

When choosing a Delchem siphon please make sure the bottom of the coloured cap (the 'spillover' point, point 'P' on the previous diagram) is lower than any existing exit point within the cistern, i.e. lever handle / side lever / side inlet internal overflow and cistern rim.

Delchem Dualflush Siphon

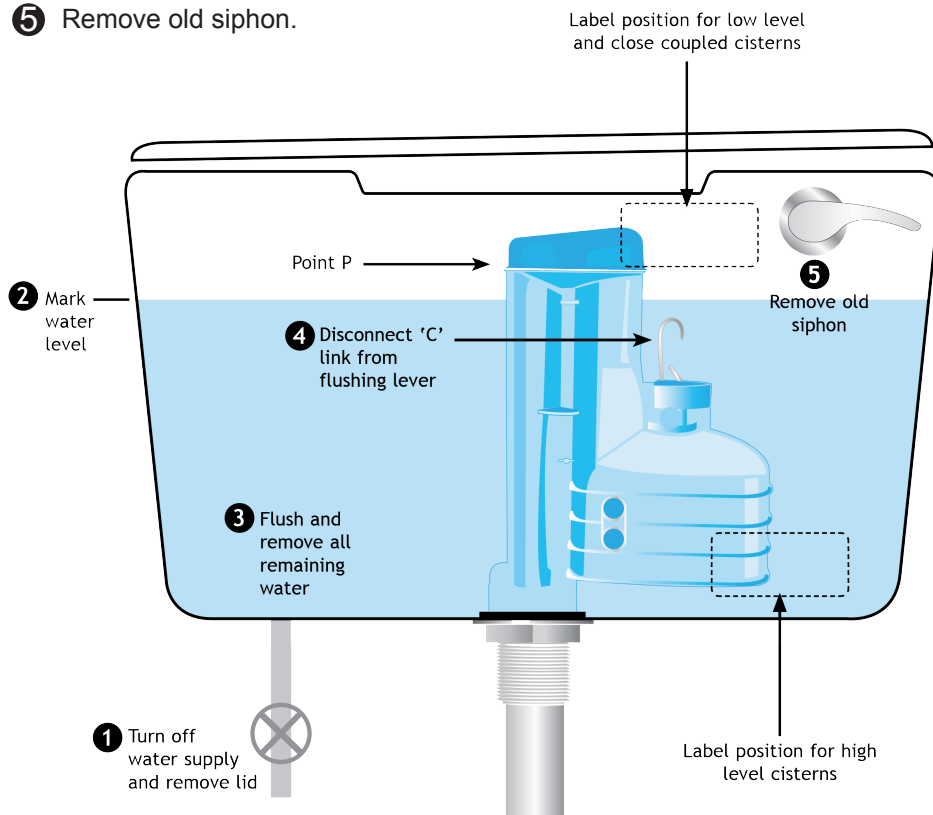


- Variable flushing volumes
- Facilitates internal overflow
- 1½" BSP outlet

STAGE 1

Pre-installation

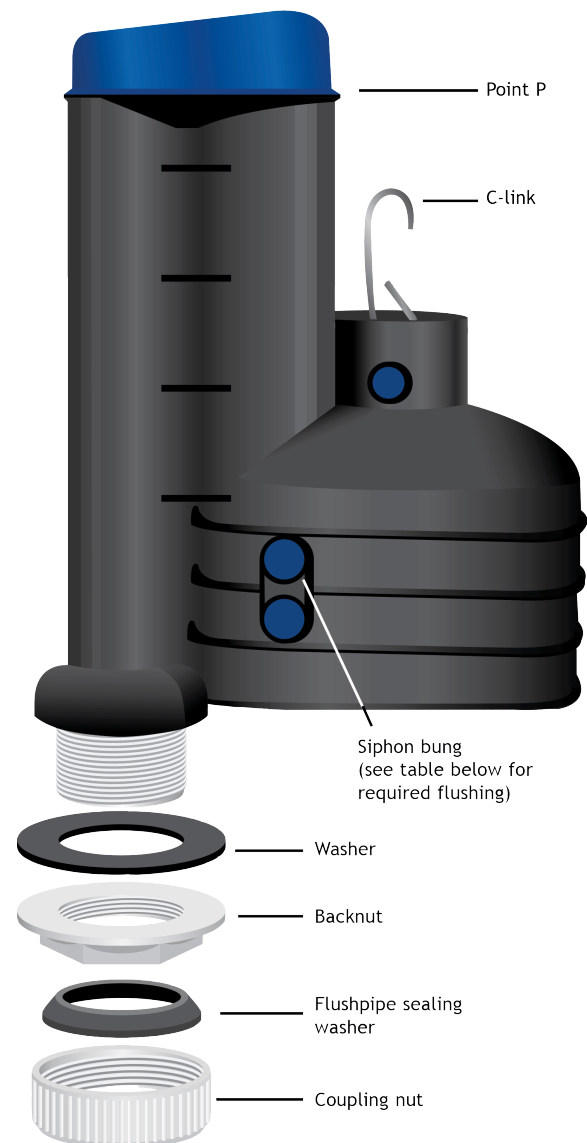
- 1 Turn off the water supply to cistern and remove cistern lid.
- 2 While still full, mark the normal water level on the inside of the cistern.
- 3 Flush the cistern and remove all remaining water with a sponge or cloth.
- 4 Disconnect the 'C' link from the flushing lever and save for use again if required.
- 5 Remove old siphon.



Note: When using internal overflow in the siphon ensure that point 'P' is below all apertures in the walls of the cistern

STAGE 2

Fitting your Delchem Dualflush siphon



For high and low level cistern

- 1 Undo the coupling nut below the cistern and undo the siphon backnut.
- 2 Take the old siphon unit out of the cistern and fit new siphon ensuring that the rubber washer is on the inside of the cistern.
- 3 Hand tighten the backnut and tighten a further quarter of a turn using suitable grips.
- 4 Refit the 'C' link
- 5 Refit the flush pipe sealing washer and coupling nut
- 6 Now fit your waterproof label as instructed.

For close coupled cisterns

- 1 Disconnect the water supply from the tail-pipe of the filling valve.
- 2 Undo the wingnuts at the rear of the WC pan and any wall fixing screws inside the cistern.
- 3 Carefully lift the cistern from the WC pan.
- 4 Remove the large 'doughnut' shaped washer, then undo the siphon backnut
- 5 Take the old siphon unit out of the cistern during which it may be necessary to remove some or all of the filling valve assembly.
- 6 Fit the siphon into the cistern ensuring that the rubber washer is on the inside of the cistern.
- 7 Hand tighten the backnut and tighten a further quarter of a turn using suitable grips.
- 8 Place a new doughnut washer on the thread and carefully reposition the cistern on the WC pan.
- 9 Replace the wall fixing screws and the wingnuts.
- 10 Refit the 'C' link.
- 11 Reconnect the water supply to the filling valve.
- 12 Now fit your waterproof label as instructed.

Siphon Flushing Volumes
(Indicative values only)

6 litres	7 litres	9 litres
○	●	●
●	○	●