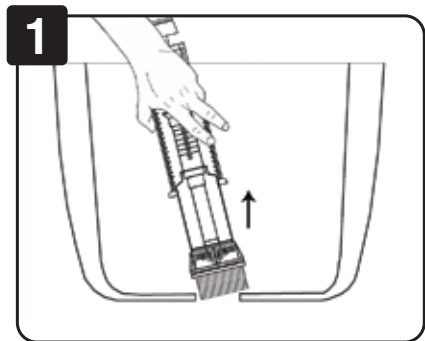


PART# 5-3309, Grev. 3, 08/17

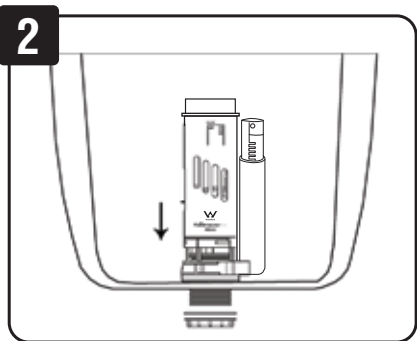
FLUIDMASTER® 560AU OUTLET VALVE
INSTALLATION INSTRUCTIONS



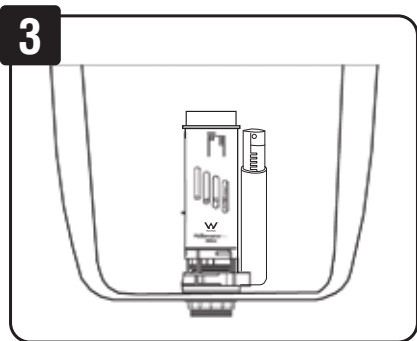
IMPORTANT: Prior to installation, turn the water off at the wall, flush cistern and mop up the residual water to avoid spillage before removing the old outlet valve. After removing the old outlet valve, please clean the cistern tank of all dirt and grime, and ensure no debris is left in the tank.



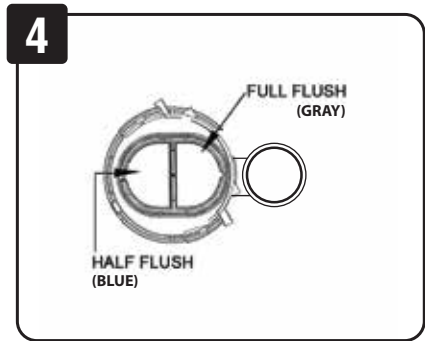
After turning the water off, remove the old fitting by removing the locking nut under the toilet tank.



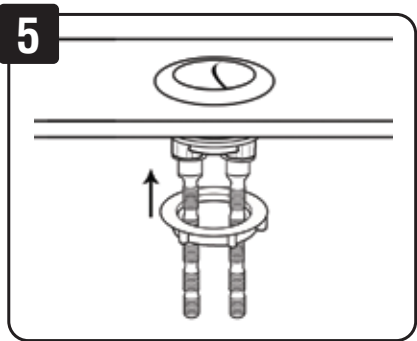
Once the old fitting is removed and the tank has been cleaned, insert the Fluidmaster outlet valve into position.



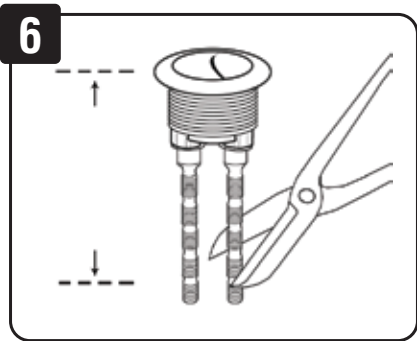
Ensure the rubber gasket is on the inside of the cistern tank. Holding outlet valve in place, thread large plastic locknut onto threads of outlet valve. Hand-tighten locknut and use large adjustable pliers to go 1/2 turn beyond hand tight. **DO NOT OVERTIGHTEN.**



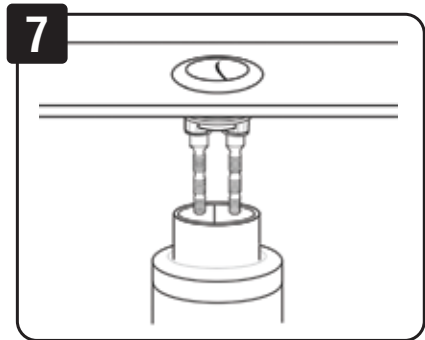
Paddle diagrams indicate half and full flush. Full circle indicates full flush and semi circle is the half flush.



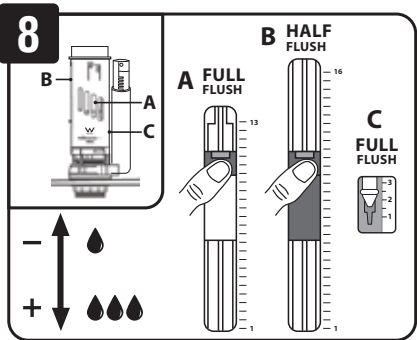
If the new button assembly is required, fit the button assembly in the lid hole and align the rods with the valve paddles. Ensure the half flush button rod matches the half flush paddle. Tighten locking nut.



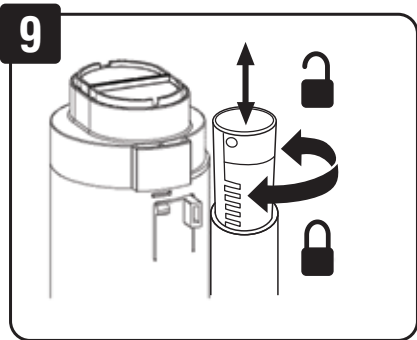
Button height can be established by measuring height from inside bottom of tank to outside of cistern lid. Deduct from the measurement the height of the valve to top of paddle. The difference is the length of the button and rod. Adjust & trim rods as required to almost touch top of paddle.



Button rods should almost touch the top of the paddles. If too long, the valve may leak water into the pan. Finely adjust the rods by screwing up or down.



A & B. To adjust **full and half flush volume**, push below tab inwards. Slide tabs upwards for less water and downwards for more water.
C. For added flexibility, the **full flush setting** can be further adjusted using the small full flush window. Slide (up) for less water. Slide (down) for more water.



Adjust over flow tube height. Adjust height to suit and turn the over flow tube to the left to lock. Ensure top of overflow is 25mm below the CL (Critical Level) line on the inlet valve. This is to ensure the correct air gap.

LOW RESOLUTION PDF
DO NOT PRINT!

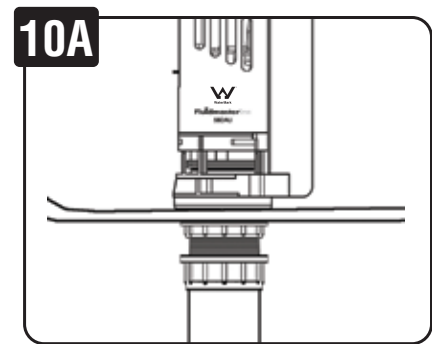
PART# 5-3309, Grev. 3, 08/17

FLUIDMASTER® 560AU OUTLET VALVE
INSTALLATION INSTRUCTIONS

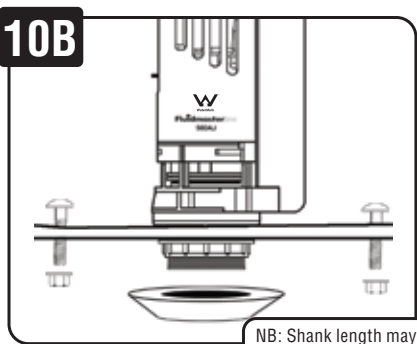
Fluidmaster 560AU Outlet Valve Suits Flush Volumes:

4.5 Litre / 3 Litre
6 Litre / 3 Litre
9 Litre / 4.5 Litre

Please retain instructions for future reference.

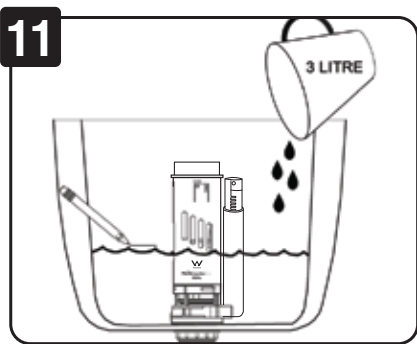


Wall Mount Cisterns: Connect the existing flush pipe to the base of the outlet valve and hand tighten the nut. Ensure the flush pipe nut washer is in good condition.

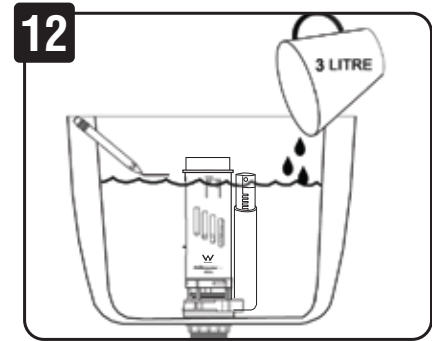


Close Coupled Cisterns: Place rubber gasket on pan hole and centre the tank onto the washer. Where required, place bolts downwards in bolt holes and tighten.

NB: Shank length may be cut to suit Close Coupled Cisterns

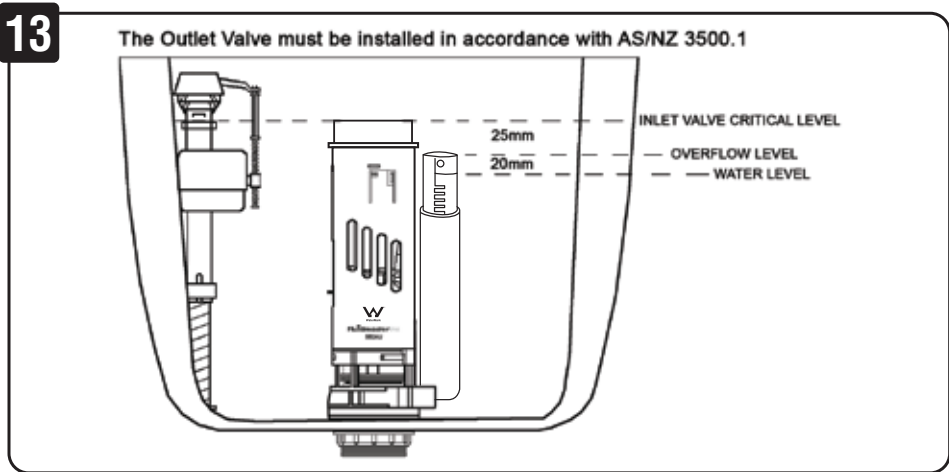


To establish water levels, pour in 3 litres of water, then press full flush. This will establish the residual water level mark, then add 3 litres on top of the residual water and mark the top of the water level. This is your 3 litre volume. Adjust half flush tab on the side to flush 3 litres.



Fill tank with additional 3 litres (6 Litre total), for 6/3L Flush or Fill Tank with additional 1½ Litres (4.5 Litre total) for 4.5/3L Flush then mark the top of Water Level. This is your Full Flush, adjust the Full Flush Tab to set this volume.

(For older 9/4.5L flush toilet cisterns, use 4.5L to set half flush mark and add 4.5L on top of half flush volume to achieve 9L full flush volume mark)

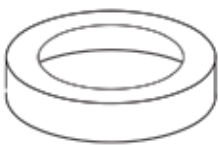


Maximum water level within the cistern tank should be no higher than 20mm below the top of the outlet valve overflow tube. The overflow tube may be raised or lowered depending on the maximum required level of water for a full flush, however the overflow height must always be 25mm below the critical level (CL) marked on the Inlet Valve to ensure an Air Gap.

OTHER REPLACEMENT PARTS AVAILABLE SEPARATELY



Tank to Bowl Gasket (Rubber)
For Close Coupled Only
Part # 6100



Tank to Bowl Gasket (Foam)
For Close Coupled Only
Part # 56-04



Flush Pipe
Locking Collar
Part # 56-03



Wedge Flush Pipe
Washer
Part # 56-02



Replacement Silicone
Outlet Washer
Part # 56-01

Fluidmaster.
Fluidmaster Holding Australia Pty Ltd
5B/100 New Street
Ringwood, Victoria 3134
Australia
Phone: +61 (03) 8870 2555
Toll Free: 1 800 931 166
Email: salesau@fluidmaster.com
Website: www.Fluidmaster.com.au

WARRANTY - Our goods come with guarantees that cannot be excluded under the Australian Consumer Law. You are entitled to a replacement or refund for a major failure and for compensation for any other reasonably foreseeable loss or damage. You are also entitled to have the goods repaired or replaced if the goods fail to be of acceptable quality and the failure does not amount to a major failure.

To present claims under this warranty, please contact your place of purchase or contact Fluidmaster Holding Australia Pty Ltd.

Warranty excludes incorrect installation. Warranty on Replaceable Silicone Outlet Washer is subject to water conditions and fair wear and tear.

IN NEW ZEALAND Call 09 415 5585

WARNING



DO NOT USE IN-CISTERN DROP-IN TOILET BOWL CLEANERS CONTAINING BLEACH OR CHLORINE. Use of such products will: (1) RESULT IN DAMAGE to Cistern components and MAY CAUSE FLOODING and PROPERTY DAMAGE and (2) VOID FLUIDMASTER WARRANTY.
DO NOT overtighten nuts or cistern/bowl may crack. Always use quality Fluidmaster parts when installing or repairing. Fluidmaster will not be responsible or liable for use of non-Fluidmaster parts during installation or repair.