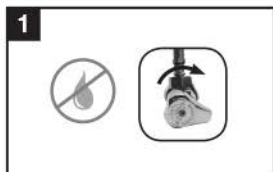


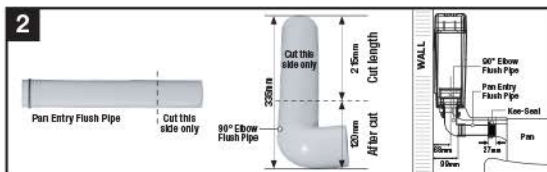
INSTALL WITH CONFIDENCE

*Fluidmaster Monaco Cistern Low level flush pipe installation shown. To view full copy of Fluidmaster Monaco Cistern instructions, please visit: <https://www.fluidmaster.com/australia-products>

7118E-020

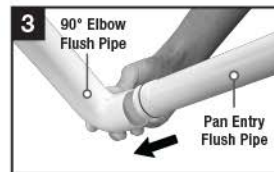


Turn off water to cistern. Flush cistern; hold down flush button to completely drain cistern tank. Unscrew flush pipe nut and remove old flush pipe kit.

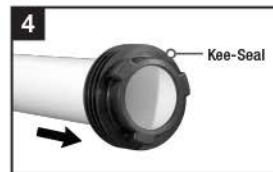


Trim / Cut flush pipes as needed.

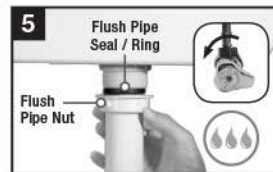
*Fluidmaster Monaco Cistern cut dimensions / specs shown.



Connect 90° elbow flush pipe to pan entry flush pipe.



Lubricate new Kee-seal with soap and water and install into pan.



Fit flush pipe nut and seal / ring on flush pipes. Hand-tighten flush pipe nut and secure flush pipe to outlet valve shank. **DO NOT OVERTIGHTEN.** Turn on water supply to cistern and inspect for leaks.

WARRANTY

Our goods come with guarantees that cannot be excluded under the Australian Consumer Law. You are entitled to a replacement or refund for a major failure and for compensation for any other reasonably foreseeable loss or damage. You are also entitled to have the goods repaired or replaced if the goods fail to be of acceptable quality and the failure does not amount to a major failure.

To present claims under this warranty, please contact your place of purchase or contact Fluidmaster Australia Holdings Pty Ltd. Note: Original proof of purchase required.

Warranty excludes incorrect installation. Installation shall be in accordance with AS/NZS 3500.1 and AS/NZS 3500.2 (Install with licensed plumber; any installation processed without licensed plumber will void warranty)

Only clean with soap and warm water to maintain quality finish. Do not use harsh chemical cleaners.



30800 Rancho Viejo Rd., San Juan Capistrano, CA 92675 | www.fluidmaster.com

Red/Green color arrangement is a registered trademark of Fluidmaster, Inc.
© 2020 Fluidmaster, Inc. ® Registered trademark of Fluidmaster, Inc.