

QUICK Install Guide

K-400H-5002

**PerforMAX® FILL VALVE & SEAL KIT
+ GREEN TOILET TOOL™**



Fluidmaster®

*See back page for important product warnings and warranty information
SPANISH - Page 16



HOW-TO VIDEO
VISIT: FLUIDMASTER.COM
K-400H-5002 PRODUCT PAGE

INSTALL WITH CONFIDENCE

GETTING STARTED

PARTS OVERVIEW

PERFORMAX® FILL VALVE



TOOLS NEEDED



Bucket



Sponge



Towel

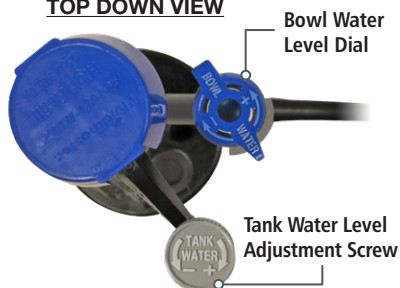


Scissors
(Optional)

Green Toilet Tool™



TOP DOWN VIEW



FLUSH VALVE SEALS



Kohler®
AquaPiston



American Standard®
Champion 3



American Standard®
Champion 4

STEP 1: PREPARE TANK

A: TURN OFF WATER



B: DRAIN WATER

Flush toilet to drain most of the water from the tank.

FLUSH



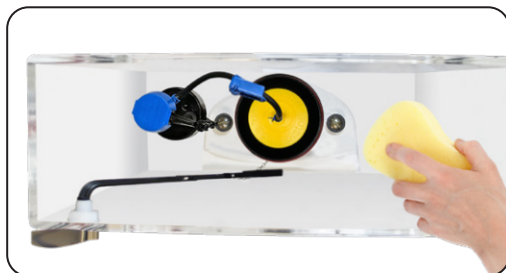
C: USE SPONGE OR TOWEL TO SOAK UP EXCESS WATER IN TANK



Sponge



Towel



STEP 2: REMOVE OLD FILL VALVE

A: REMOVE CONNECTOR

Remove water supply connector from bottom of fill valve.



Towel
(Optional)

NOTE: Inspect water supply connector. Replace it if it is worn, or you don't know how old it is, to prevent flooding and property damage.



B: REMOVE OLD LOCKNUT

Use the **Green Toilet Tool™** to twist locknut below tank to remove locknut from fill valve.



Green Toilet Tool™



C: REMOVE OLD FILL VALVE

Including refill tube, refill clip and shank washer.

Drain any excess water into bucket by removing fill valve from tank. (Pull fill valve up)



Bucket
(Optional)



STEP 3: REMOVE & REPLACE FLUSH VALVE SEAL

See below for your specific flush valve seal replacement instruction.

For more detailed instructions and installation videos, please visit our website at Fluidmaster.com & enter **K-400H-5002** in the search field.

Kohler® AquaPiston (use **YELLOW** seal):

Remove and replace old seal, placing new seal in **groove** at bottom of canister.



American Standard® Champion 3 (use **YELLOW** seal):

Remove and replace old seal by sliding the seal up and over the valve. Replace with new seal in **groove** at bottom of canister.



American Standard® Champion 4 / Eljer® Titan 4 (use **BLUE** seal):

Unthread black nut on top of green cover. Remove cover and replace seal.



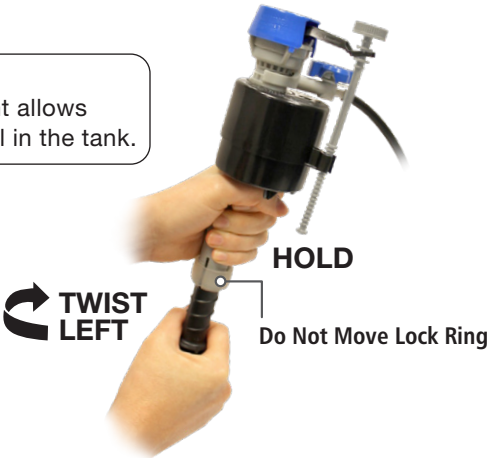
STEP 4: ADJUST HEIGHT OF NEW FILL VALVE

A: TWIST FILL VALVE TO ADJUST HEIGHT

Top of fill valve cap should measure *roughly 3"* above top of overflow pipe when installed.

NOTE:

Increasing height allows more water to fill in the tank.



Hint: Use the Green Toilet Tool™ to measure.

STEP 5: INSTALL NEW FILL VALVE

A: INSERT FILL VALVE

Position refill tube to face flush valve making sure fill valve parts **do not interfere with lever arm**.

HINT: See next page for full tank setup.

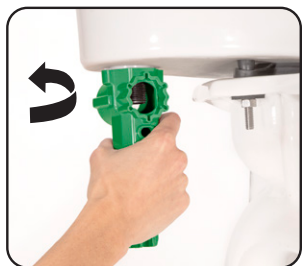


B: INSTALL LOCKNUT

Using **Green Toilet Tool™**, screw locknut onto fill valve shank (below tank). Tighten 1/4" beyond hand-tight. **Do Not Overtighten***.



Green Toilet Tool™



C: PUSH REFILL TUBE ONTO REFILL PORT

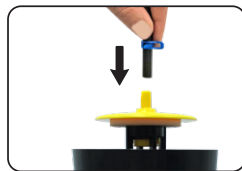


D: CONNECTING REFILL TUBE TO FLUSH VALVE



FOR KOHLER® AQUAPISTON:

Push refill tube onto yellow nipple on flush valve.

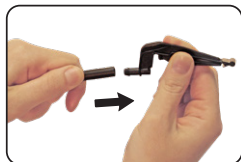


STEP 5: INSTALL NEW FILL VALVE (CONT'D)

○ FOR AMERICAN STANDARD® CHAMPION 4:

Push refill tube onto refill clip.

Attach refill clip to right side of overflow pipe so the refill tube points into the pipe, not the tank.



○ FOR AMERICAN STANDARD® CHAMPION 3:

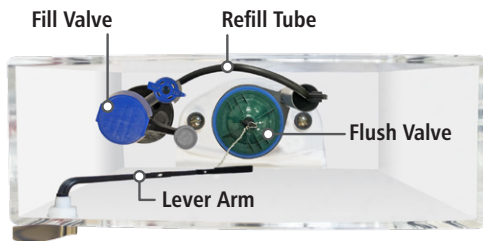
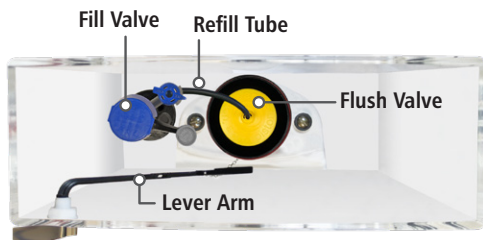
Push refill tube onto refill clip, then attach refill clip to flush valve overflow pipe.

Reuse original refill clip.
Do not use Fluidmaster® refill clip.



Scissors
(Optional)

NOTE: If refill tube is too long to fit inside tank with lid closed, cut tube.



STEP 6: FINISHING STEPS

A: ATTACH WATER SUPPLY CONNECTOR TO FILL VALVE

Twist to tighten.

***Hand-tighten only.**

DO NOT OVER TIGHTEN.



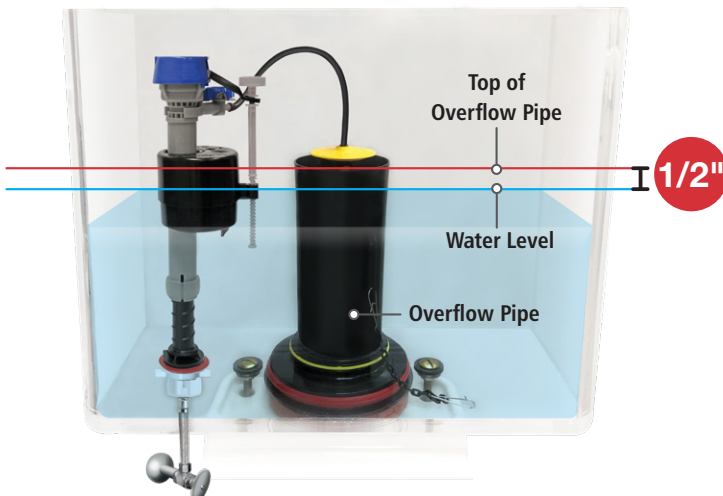
B: TURN ON WATER

Check for leaks.



C: WATER LEVEL

After the tank stops filling, water level should fill the tank to **roughly ½ inch below top of overflow pipe** to ensure a proper flush. (Does not need to be exact.)

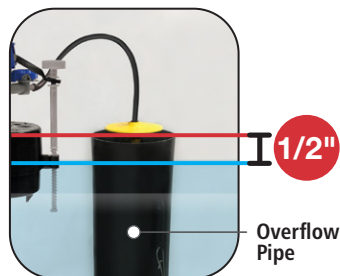


* Over tightening may crack the fill valve or tank causing flooding. Make sure the float cup does not touch the tank walls or tank lever and flush valve.

STEP 7: FINE-TUNE TANK WATER LEVEL

A: FLUSH THE TOILET TO CHECK THE TANK WATER LEVEL

After the water stops filling the tank, the water level should be **roughly ½ inch** below the top of overflow pipe to ensure a proper flush.



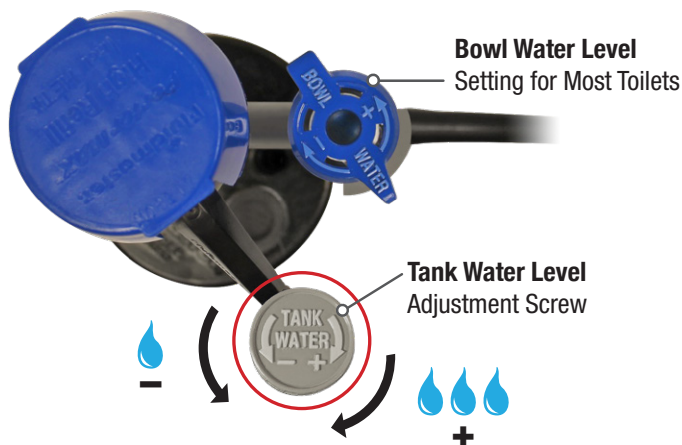
See Step 6C for Full Tank view

B: WATER LEVEL IS TOO LOW

Turn the tank water level adjustment screw clockwise to raise the float. Flush to reset water level.

WATER LEVEL IS TOO HIGH

Turn the water level adjustment screw counterclockwise to lower the float. Flush to reset water level.



STEP 8: FINE-TUNE BOWL WATER LEVEL

NOTE: The PerformAX Fill Valve is pre-set to fill the proper **bowl water level** in most toilets straight out of the box (see *previous page*).

A: FILL BOWL WITH A GALLON OF WATER

Wait 1 minute until the bowl water level recedes down and stops.



B: MARK THE WATER LEVEL IN THE BOWL

With a pencil, draw a line at the top of the water level in bowl. (Pencil mark will easily wash off).



C: FLUSH TOILET TO CHECK BOWL WATER LEVEL

If the water level **matches the line** you've made in the bowl when the fill valve **stops filling the tank**, the water level is correct, proceed to Step 9.



If the water level matches the line in the bowl and the fill valve is **STILL FILLING**, then the bowl water is **TOO HIGH**, proceed to Step 8D.



If the valve shuts off and the water level **does NOT match the line in the bowl**, the water level is **TOO LOW**, proceed to Step 8D.



D: ADJUST THE BOWL WATER LEVEL

TOO HIGH:

Turn the dial **clockwise**.



LESS WATER

TOO LOW:

Turn the dial **counter-clockwise**.



MORE WATER

STEP 9: FLUSH THE TOILET

A: FLUSH THE TOILET, CHECK BOWL WATER LEVEL.

Repeat Steps 8C and 8D until water level in bowl matches the line when the fill valve shuts off.

If you're satisfied with the flush, **YOU'RE DONE!**



YOU DID IT!

We knew you could!

Share your success story
with friends and family!



#FixedMyToilet

#Fluidmaster

**Still not working exactly right?
See the next page for Troubleshooting.**

TROUBLESHOOTING

IF THE FILL VALVE:

- **DOES NOT TURN ON**
- **WON'T TURN OFF**
- **WON'T REFILL TANK**

REMOVE CAP AND CHECK FOR DEBRIS

- A:** Turn off water supply.
- B:** Flush toilet.
- C:** With right hand push float up, grip and hold shaft under float.
- D:** With left hand twist cap and lever arm counterclockwise to unlock cap. Let cap hang on float cup.
- E:** Hold empty cup upside down over uncapped valve to prevent splashing.
- F:** Turn water supply on and off a few times.
- G:** Turn water supply off.
- H:** Replace valve cap.
- Place cap assembly on top of gray valve body by aligning cap arm and adjustment rod next to refill tube.
 - Press down on top cap while rotating top & arm clockwise to locked position.



**See Our Troubleshooting
HOW-TO VIDEO**
<http://bit.ly/2yAdZn7>

TROUBLESHOOTING

REPLACE FILL VALVE SEAL

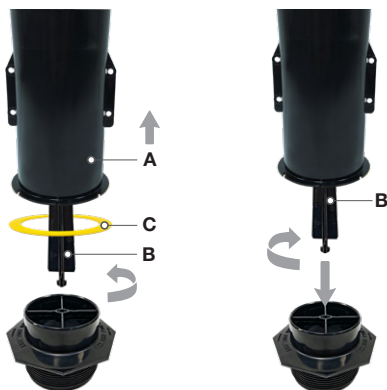
- A:** Remove cap (see page 12).
- B:** Replace seal with a *genuine Fluidmaster 242 Seal.
- C:** Replace valve cap.
- Place cap assembly on top of gray valve body by aligning cap arm and adjustment rod next to refill tube.
 - Press down on top cap while rotating top & arm clockwise to locked position.



* Always use genuine Fluidmaster parts when installing or repairing. Fluidmaster will not be responsible or liable for use of non-Fluidmaster parts during installation or repair.

IF YOU CAN'T REMOVE THE AQUA PISTON YELLOW / BLACK CAP

1. Turn off water supply. Flush toilet.
2. Remove refill tube from top of yellow / black cap.
3. Lift up on Canister (A) until it stops.
4. Reach into tank and grab the Center Guide (B). Turn counterclockwise and remove from tank.
5. Remove old seal, placing new Seal (C) in groove at bottom of canister (A).
6. Align Center Guide (B) with hole in center of base. Insert into hole. Turn 1/4 clockwise to lock.
7. Replace refill tube back into cap.



NOTES

NOTES / NOTAS:
